

Global Ship Service



GREEN SKY MARINE SERVICES LLC

📍 Office # 1114, 11th Floor Churchill Tower
Business Bay PO Box 42316 Dubai UAE

☎ +971 4 5808917

TRN -100602114900003
<https://greenskymms.com>

Ship MRO

☎ +971 506896361

✉ technical@greenskymms.com

Ship Parts

☎ +971 509126239

✉ sales@greenskymms.com



GREEN SKY MARINE SERVICES LLC



TOTAL MARITIME SOLUTION PROVIDER

| Global Sales

Marketing & Technical Support / Service

01. Company Introduction

1-1. About us & Core Value

| About us

GREEN SKY MARINE SERVICES LLC is based in DUBAI and authorized agent of Hyundai Welding Company and Elite Marine . The company was registered on March 2021 in Dubai.

Green Sky Marine Services LLC has been established with the objective of providing quality technical support including the supply of spare parts and repair services to the shipping companies in the Middle East area especially to ships calling any UAE ports and neighboring countries. Manned with qualified and experienced local engineers ,technicians and with support from experienced Engineers in Korea and Chinese company will meet customers' every need efficiently.

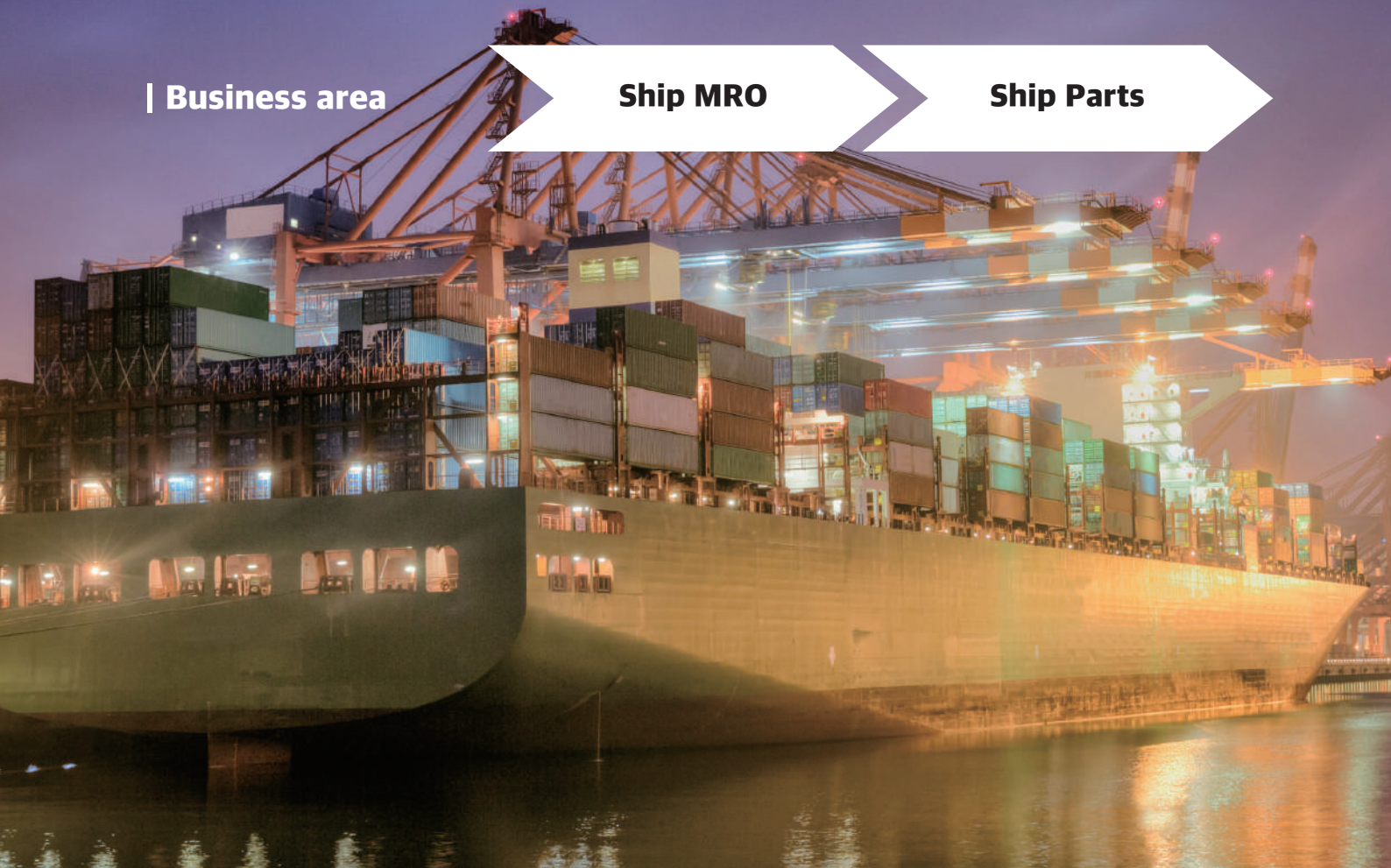
Having high engineering standards, the company's motto is to provide quality and result-oriented services to our valuable customers to their satisfaction. The company provides technical support and services at extremely competitive prices prevailing in the current market.

Please contact Green Sky Marine Services for all your supply, services and repair needs within our scope of supply highlighted in this document.

| Business area

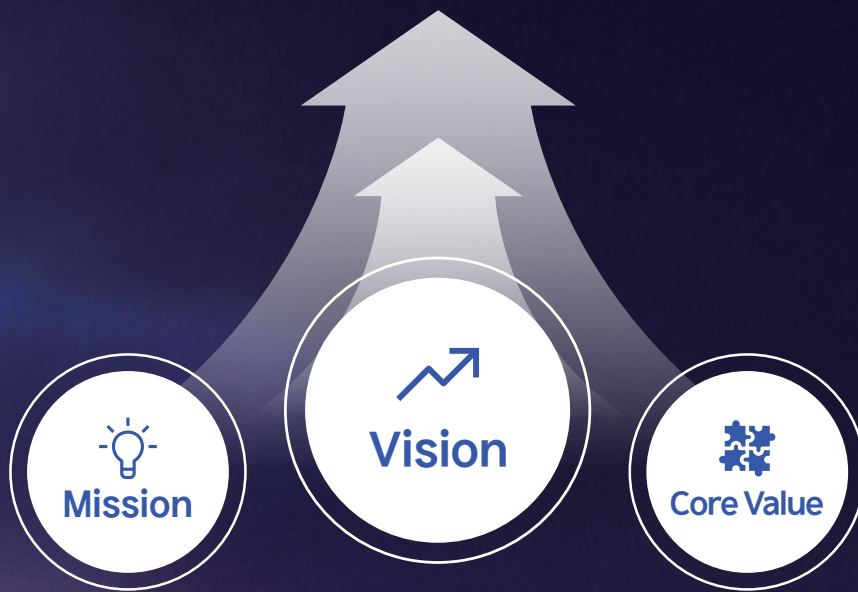
Ship MRO

Ship Parts



| Core Value

We build the Future of Global Shipbuilding



Mission

To deliver cutting-edge shipbuilding technology to shipyards worldwide, leading innovation in the maritime industry and enhancing global sustainability

Vision

To Become Global Leader in Shipbuilding technology, driving sustainable Innovation

Core Value

Innovation

+

Global
Partnership

+

Customer
Centricity

02. Ship MRD

2-1. Maintenance, Repair & Overhaul

We specialize in providing maintenance, repair and overhaul services for ship machinery and electrical systems. We support various ship equipment and systems to maintain optimal performance, offering customized solutions that maximize operational efficiency and minimize downtime.

Green sky marine services LLC provides not only spare/repair service for engines but also arranges general repair services, such as BWTS retrofit, E/R piping modifications, hull repairs, and outfitting repairs. These services are offered through the 'Oriental Repair Network,' which covers Singapore, Chinese ports, and Korea, ensuring all repair quality meets global standard requirements.



Alpha lubricator service

Based on our service experience and our guideline for overhaul intervals, the following parts must be replaced every 5 years or 32,000 R/H to ensure optimal and trouble free operation.



M/E Pneumatic Control System overhaul service

Components

- Repair kits for VIT Actuator
- Repair Kits for reversing air cylinder
- Repair Kits for pneumatic control system
- Working period : 3 Days in D/D



Retrofit of Water in Oil Sensor

The solution for the damage related to the water content in lube oil system. Installation of Water In Oil Sensor is considered as standard for the future new building projects and retrofit of Water In Oil Sensor for already delivered vessels.



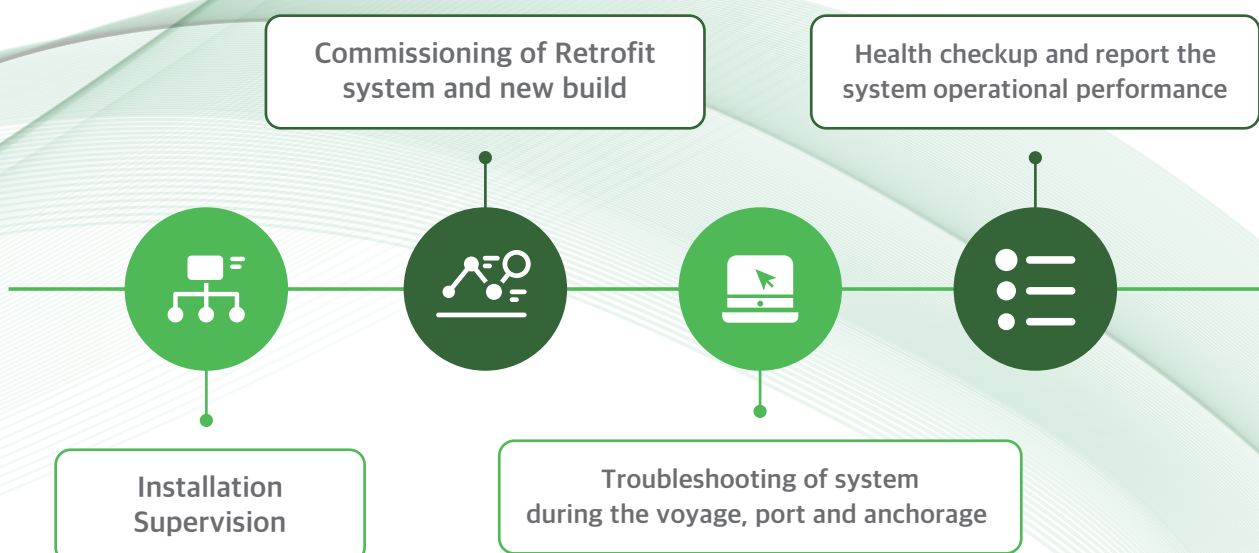
General Repair Service

- Portable fire extinguisher & CO2 sys service
- Crane jib cracked plate replacement
- Cylinder cover overhaul
- Repair work for windlass
- M/E top bracing maintenance
- Crank Shaft Maintenance

We offer professional repair, overhaul, and retrofit services for ship machinery and electrical systems. Our services ensure quick diagnostics and solutions using genuine parts, optimizing system performance and extending the lifespan of various ship equipment. Through regular maintenance and upgrades, we help reduce operational costs, improve efficiency, and enhance safety.



| Work Scope



02. Ship MRD

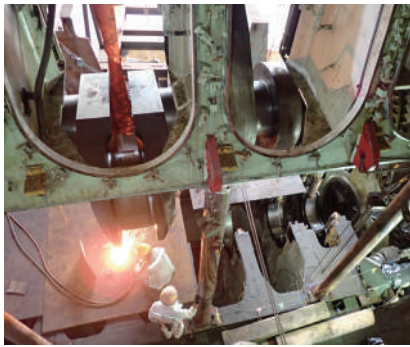
2-1. Maintenance, Repair & Overhaul

| 2-Stroke Engine Overhaul (MDT, Win-GD)



Work Scope

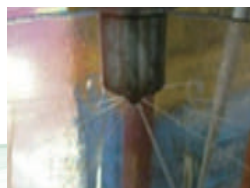
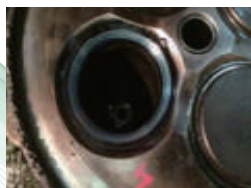
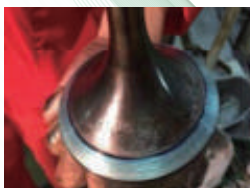
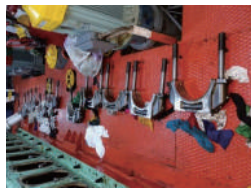
- ME Type Engine Maintenance
- Pneumatic Control Maintenance
- Alpha Lubricator Maintenance (5, 10 years)
- Maintenance Work / Overhaul inspection according to Engine Running Hour



Benefits

- Overhaul service includes overhaul kit and dispatching S/V at vessel's dry docking
- Correct engine maintenance work for 2,000/4,000/6,000/8,000/16,000 hours will be guided by service engineer during maintenance work.
- Correct engine operation working procedure will be guided by service engineer during maintenance work in order to protect big damage of engine.
- High quality maintenance service
- Easy of engine operation
- Safety voyage

| 4-Stroke Engine Overhaul (MDT, Win-GD)



Work Scope

- Cylinder head overhaul
- Con-rod dis-assembling & maintenance
- Main bearing inspection (1 set only)
- Piston, liner dis-assembling & maintenance
- Timing gear, pump driving gear inspection
- Tappet, rocker arm check
- Camshaft bearing inspection
- Oil pump, water pump inspection
- Test trial

| Alpha Lubricator Overhaul & Retrofit



Work Scope

- Inspection of control unit
- Timing check of angle encoder & pick up sensors
- Replacement of pick-up sensors
- Inspection of feedback sensors
- Simulation test by pre-lubrication
- Routine maintenance for running hours(5 years, 7 years)



Benefits

- Cylinder lubrication oil saving of 20-50% at low load
- More accurate feed rate control at all engine loads
- Minimizing over-lubrication at low load, Reducing deposits, hence improving the cylinder condition
- Implementation of latest design features
- Upgraded interface by latest software version



| Ballast Water Treatment System



The Ballast Water Treatment System (BWTS) is a crucial system for ensuring compliance with environmental regulations, treating ballast water discharged by vessels during voyages to prevent the spread of invasive species and protect the marine ecosystem. However, due to continuous operation and the challenges posed by the marine environment, regular maintenance and repairs are required. We offer specialized repair services for BWTS based on advanced technology and extensive experience.

02. Ship MRD

2-1. Maintenance, Repair & Overhaul

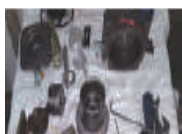
| M/E Pneumatic Control System Overhaul

The Main Engine Pneumatic Control System plays a crucial role in ensuring the efficient operation and safety of the engine. This system is responsible for regulating key functions such as fuel supply, speed control, and automatic regulation.

Over time, wear or failures in components can occur, making regular overhauls necessary to prevent issues. We provide specialized overhaul services for the Main Engine Pneumatic Control System to ensure the stable and efficient operation of the vessel.



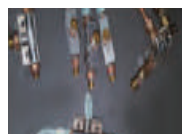
Reversing Air Cylinder



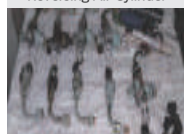
Actuator



Pos No. 84, 86, 88



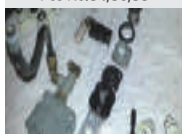
Pos No. 50, 103, 85, 87, 89, 91



Pos No. 128X6



Pos No. 117



Pos No. 101



Pos No. 45, 59

Work Scope

- Ensure safety voyages
- Periodic maintenance
- Components
- Repair Kits for VIT Actuator
- Repair Kits for reversing air cylinder
- Repair Kits for pneumatic control system
- Working period : 3 Days in D/D

| Recommended maintenance intervals

Interval	Within 1 year	2 years	3 years	6~8 years
Drain	Once a day			
Filters	- 1 month after delivery - 1 year after delivery		Overhaul	- Overhaul - Renew rubber part - Renew filter elements
- Low-Pressure - Pneumatic - Devices (less than 10kgf/cm ²)			Overhaul	- Overhaul - Renew rubber part - Renew filter elements
- Low-Pressure - Pneumatic - Devices (less than 30kgf/cm ² or less)		Overhaul	- Overhaul - Renew rubber part - Renew filter elements	

| Repair and Overhaul of Machinery Part



Ship machinery parts can gradually wear out or fail due to various external and internal factors during operation. To keep these machinery components in optimal condition, regular repairs and overhauls are essential.

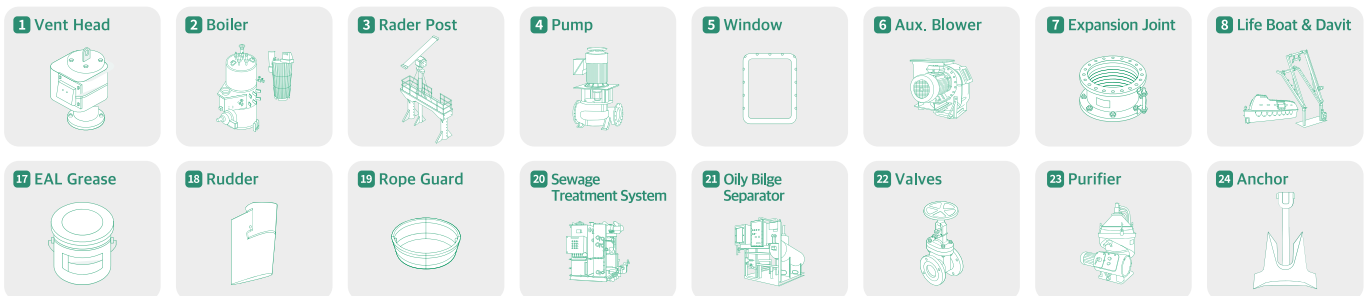
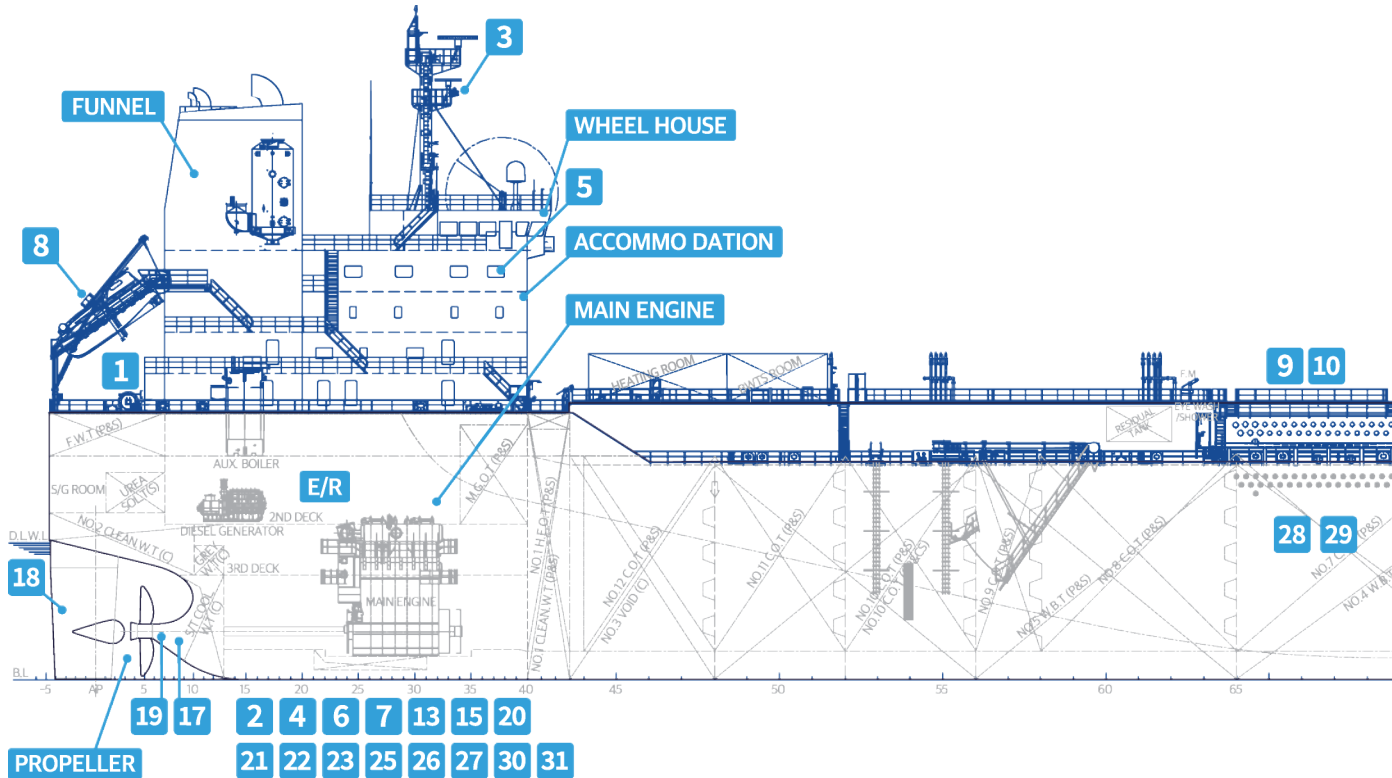
We offer comprehensive repair and precision overhaul services for ship machinery parts, providing professional support to optimize vessel performance and minimize operational downtime.

Repair and overhaul work related to machinery parts plays a vital role in ensuring the safe and efficient operation of the vessel. Our key services include:



03. Ship Parts

3-1. Engine Room Spares

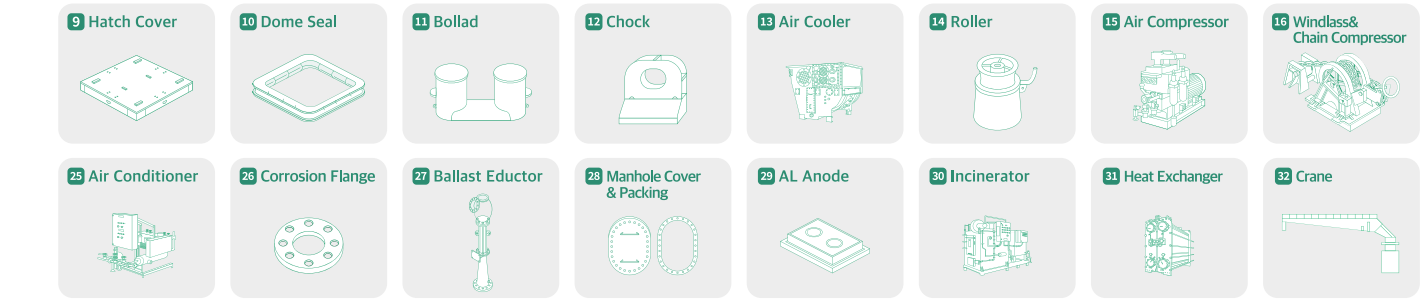


Engine Room Machinery

- M/E & D/G Engine
- Various Pump & Motors
- Various valve & remote control system
- Purifiers
- Air compressor
- Oily water separator
- Filters
- Heat exchanger & cooler
- F.W Generator
- Boiler
- MGPS
- Sewage Treatment
- Calorifier, Sterilizer
- Mineralizer

Hull Machinery & Outfitting

- ICC & Anode
- Steering Gear & Winches
- Bow / Stern thruster
- Various crane & davit
- Life saving appliance
- Hatch cover fittings
- Accom. Ladder / Pilot ladder
- Air con plant / Ref plant
- Elevator
- Air horn & whistle
- Vent fan & Motor



Electrical Equipment

- Various elect motors
- E/R monitoring system
- Lighting Fixture
- Fire Detection System
- Rader, Gyro compass
- Echo Sounder / Doppler speed Log
- Electronics / Automation

Cargo Oil Handling System

- C.O.Pump / W.B.Pump & Turbine
- Level Gauge
- Valve & Remote control system
- Fire Extinguishing system
- Detection System
- Inert Gas System

03. Ship Parts

3-1. Engine Room Spares

High-quality Engine and Engine room machinery spare parts are essential for the stable and efficient operation of vessels.

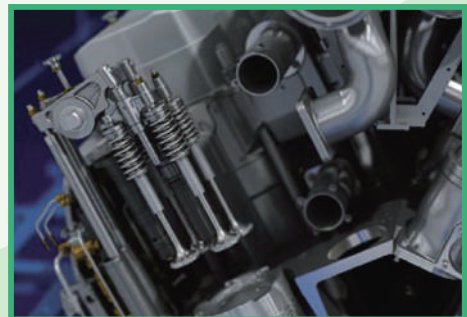
We provide high-quality spare parts tailored to various ship machinery systems, offering quick and efficient replacement solutions for components such as engines, electrical systems, pumps, valves, piping systems, and other mechanical parts.



| 2-Stroke Engines



We provide high-quality parts for the 2-stroke engines, which are crucial for ship operations. We are capable of responding quickly to customer needs to ensure that the engines operate safely and efficiently.



| 4-Stroke Engines



We provide high-quality parts for the 2-stroke engines, which are crucial for ship operations. We are capable of responding quickly to customer needs to ensure that the engines operate safely and efficiently.

| Engine Room Machineries

We specialize in supplying essential engine room machinery parts for the marine and heavy industries, providing solutions that maximize the stability and performance of engines and related systems. The engine room is a critical hub for ship operations, and the equipment within it is essential for maintaining performance and ensuring efficient operations.



Pump & Motor



Oil Purifier



Aux . Boiler



Exh. Gas Economizer



Air Comp



Air Reservoir

With extensive experience and expertise, we offer a wide range of key components such as pumps, cooling systems, generators, air and exhaust systems, and control equipment. The parts provided include high-quality components, allowing for optimal choices tailored to the customer's needs and budget.

We ensure that your vessels remain reliable wherever they are, through products compatible with equipment from globally recognized major engine manufacturers. Beyond just supplying parts, we provide customized services that support optimal maintenance strategies and performance improvement.



H.W. Calorifier



Sterilizer



General Valve



Control Valve



S&T Heat Exchanger



F..W Hyd. Unit

03. Ship Parts

3-2. Ship Machinery spares

| Hull Machinery & Outfitting

We provide Hull Machinery & Outfitting parts and solutions to ensure vessel integrity and efficiency. Our products, including dock equipment, deck machinery, cargo handling systems, and mooring equipment, meet international standards and are optimized for various vessel types.



Steering Gear



Windlass Winch



Mooring Winch



Life & Rescue Boat & Life Raft

We improve vessel efficiency with products based on the latest technologies and global standards. By optimizing lifecycle costs, we provide cost-effective solutions.

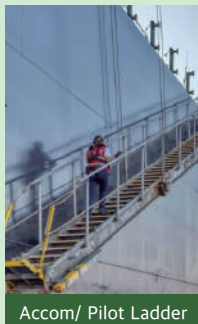
With reliable products and expert support, we ensure stable operations and continuous performance improvement.



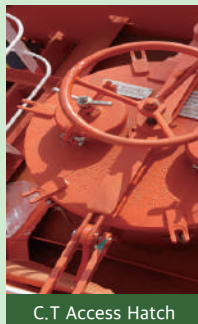
Crane



Davit



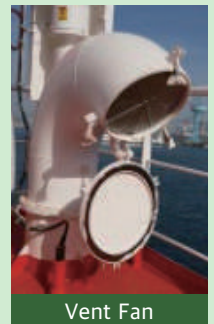
Accom/ Pilot Ladder



C.T Access Hatch



W.T Sliding Door



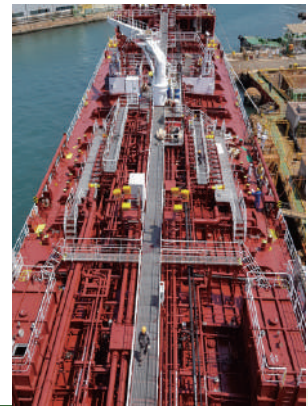
Vent Fan

| Hull Piping System

The Hull Piping System is crucial for safe and efficient vessel operation, controlling the flow of liquids and gases like fuel, coolant, and exhaust gases, and ensuring overall performance and safety.



B.W.T. System



C. O. Manifold, Reducer and Piping

We offer a range of parts and solutions for Hull Piping Systems, including pipes, valves, fittings, and pumps, designed for high-pressure, high-temperature environments. Our parts are made from corrosion-resistant materials, ensuring durability and stability in marine conditions.

We offer custom piping systems that meet international standards and provide expert support for installation, maintenance, and inspections. Our efficient Hull Piping Systems optimize vessel operations, reduce costs, and extend system lifespan.



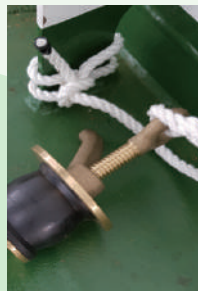
T.K Cleaning Heater



I.G Generator



Accom/ Pilot Ladder



C.T Access Hatch



W.T Sliding Door



Vent Fan

03. Ship Parts

3-2. Ship Machinery spares

| Electrical Equipment

The Electrical Equipment on a vessel is a key system that ensures stable operations by managing power supply, control, lighting, communication, and other electronic systems. We provide various electrical components, including generators, switchboards, circuit breakers, voltage regulators, lighting systems, and more. All our products meet international marine standards and are designed to support safe and efficient vessel operations.



Bridge Console



ECR Console



Satellite



S & X Band Radar



Main Switch Board

We provide customized electrical equipment solutions based on the latest technology and strict quality control. With comprehensive technical support, including installation, maintenance, and upgrades, we ensure safe and efficient vessel operations.



Sensors



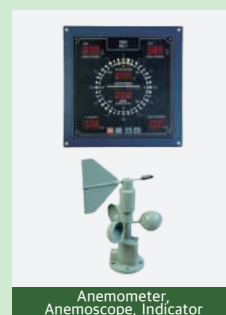
Lighting Fixture



MCCB & ACB



Telephone



Anemometer,
Anemoscope, Indicator

| Accommodation Equipment

The Accommodation Equipment on a vessel is crucial for optimizing the living environment of the crew and passengers, ensuring comfort and safety during voyages. The living spaces on board play a key role not only in operational efficiency but also in enhancing the health, safety, and well-being of the crew. Efficient design and high-quality components are essential for this purpose.



Window Glass, CVS, Wiper



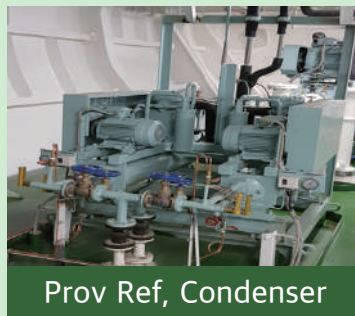
Air Handling unit



Air Con Condenser unit



Cold Chamber



Prov Ref, Condenser

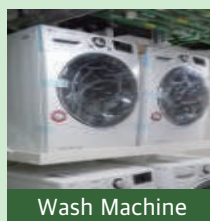


Elevator

We specialize in providing a wide range of components for Accommodation Equipment, including bedrooms, bathrooms, cooking facilities, HVAC systems, lighting, and heating and cooling systems. These products are designed to be suitable for the maritime environment, ensuring durability, safety, and crew comfort. Additionally, products designed with a focus on space utilization and efficiency help create an optimal living environment, even in limited spaces.



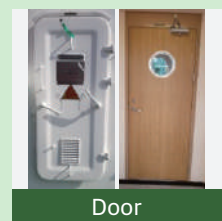
Galley Equip.



Wash Machine



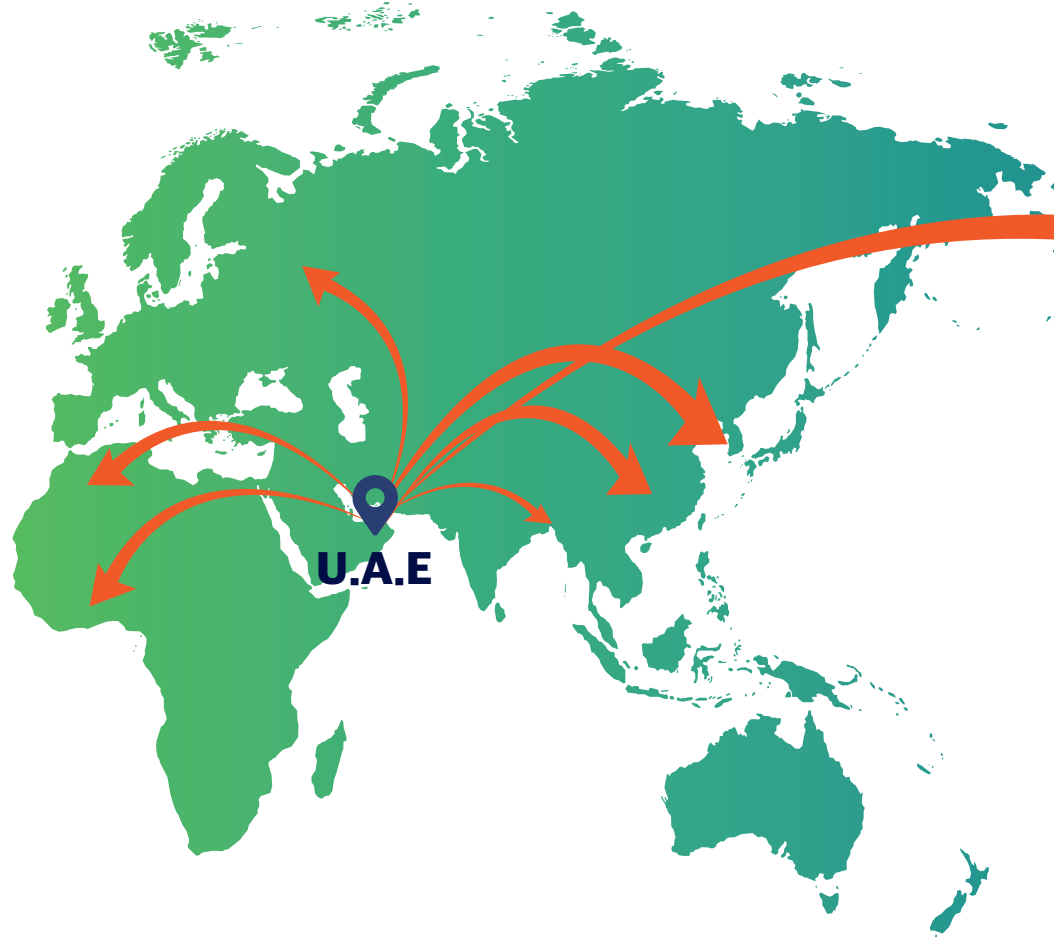
Vacuum Toilet



Door

04. Others

4-1. Certificate / Global Network



| Certificate

A Leader in the High Technology

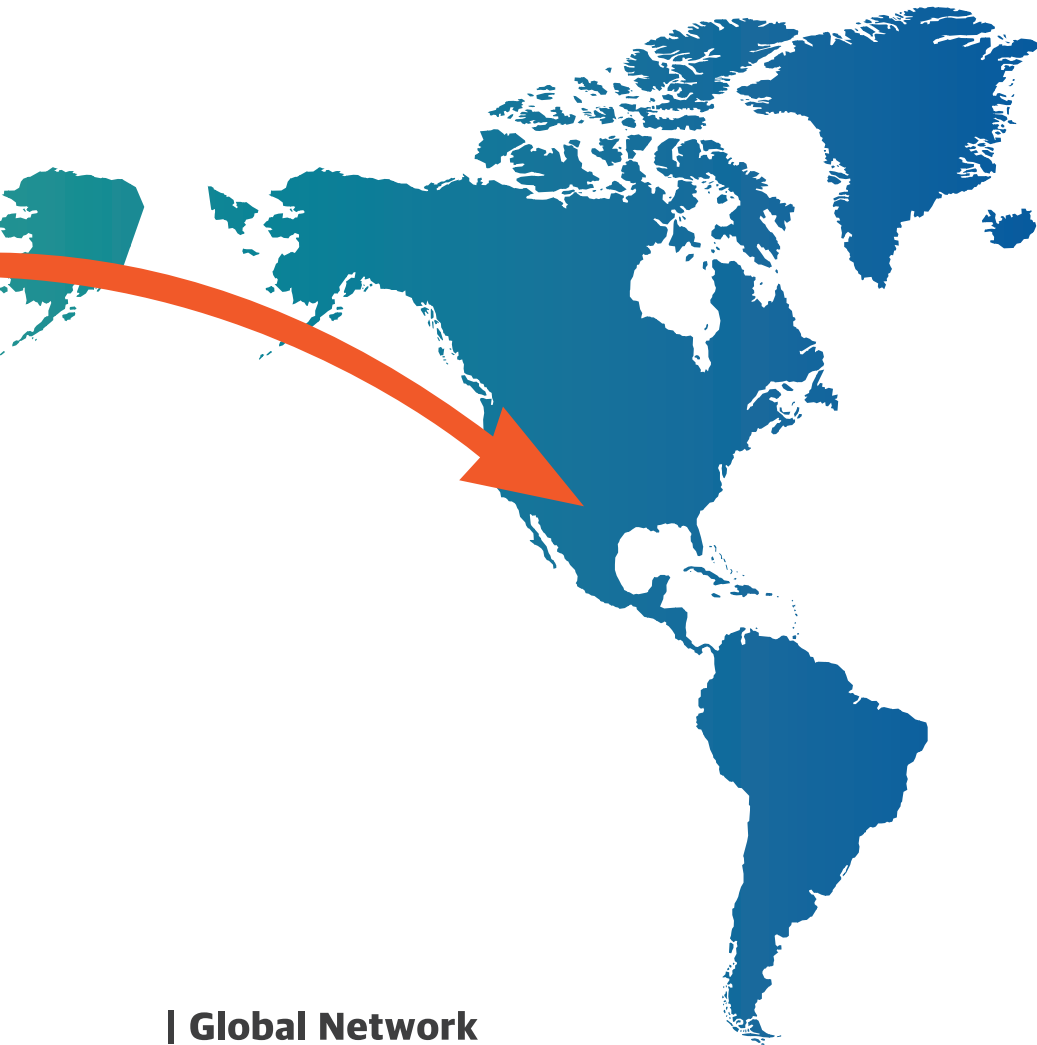
With more growth aiming toward the future always considers the quality and environment in advance.



Chamber of commerce news in UAE and the world



Cooperate with Hyundai Welding Co.,Ltd.



| Global Network



GREEN SKY MARINE SERVICES LLC

📍 Office # 1114, 11th Floor Churchill Tower
Business Bay PO Box 42316 Dubai UAE

☎ +971 4 5808917

TRN -100602114900003
<https://greenskymms.com>

Ship MRO

☎ +971 506896361

✉ technical@greenskymms.com

Ship Parts

☎ +971 509126239

✉ sales@greenskymms.com
